

# Free Concerts For The Whole Family!

The Compton Heights Concert Band's  
*America's Music...America's Band!*

Edward Dolbashian, Music Director & Conductor  
Presents

## Sunday Serenades & Musical Mondays 2003

Sundays - Francis Park - 7:30 PM  
June 29, July 6, 13, 20, 27, and August 3  
Eichelberger & Donovan, St. Louis, Missouri

Mondays - Tower Grove Park - 7:30 PM  
June 30, July 7, 14, 21, 28, and August 4  
S. Grand & Magnolia, St. Louis, Missouri



MOOSIC!™



Modesto  
Tapas Bar & Restaurant

FOOT AND ANKLE  
ASSOCIATES

Southwest Bank  
*The Name To Count On Since 1920*

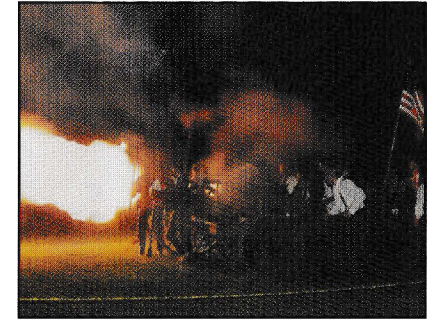


### Hooray! USA!

Hugh Smith, Tenor; Robert Ellison, Baritone  
& St. Louis Hills Chorus!

Sunday, June 29<sup>th</sup> Francis Park 7:30 PM  
Monday, June 30<sup>th</sup> Tower Grove Park 7:30 PM

A "July 4<sup>th</sup>" Extravaganza featuring the "4<sup>th</sup> tenor" Hugh Smith; Robert Ellison, baritone; the Civil War Cannons; and the St. Louis Hills Chorus in a fab *1812 Overture* Finale! Hooray for the Red, White and Blue!



### Handy Dandy!

Butchwax & The Hollywoods, Billy Peek & Swing Dancers!

Sunday, July 6<sup>th</sup> Francis Park 7:30 PM  
Monday, July 7<sup>th</sup> Tower Grove Park 7:30 PM

Tribute to the National "Year of the Blues" and the 100th Anniversary of its conception by W.C. Handy. All audience members receive FREE Blue Bunny Ice Cream treats both nights! Yum! Yum!



### Dis' Wiz!

James Christensen

Sunday, July 13<sup>th</sup> Francis Park 7:30 PM  
Monday, July 14<sup>th</sup> Tower Grove Park 7:30 PM

Perennial favorite, James Christensen, former Walt Disney Music Director, brings his energetic guest conducting skills to a magical program of Disney music featuring his thrilling arrangements for Band. Bring the family! One of the most popular programs of the season! Show Biz with Diz Wiz!

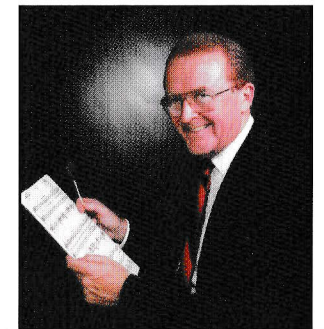






Photo by: Mary Burkus

The amazing **Hugh Smith**, "The 4<sup>th</sup> Tenor", hitting a high note at the Compton Heights Concert Band's 5th annual Powell Hall "Holiday Spectacular", backed by the Compton Heights Concert Band and the St. Louis Hills Chorus. Hugh is making two appearances with the Band and the Chorus this summer - the first and last weeks of the *Sunday Serenades* and *Musical Mondays* series.



Armonica soloist, **Carolinn Skyler**, playing the world's largest armonica, five feet long, manufactured by the legendary Gerhard Finkenbeiner. Finkenbeiner, ironically a Benjamin Franklin look-alike, mysteriously disappeared recently while piloting his small plane over Massachusetts. Skyler's quartz armonica consists of 61 hand-blown crystal bowls of different diameters, each corresponding to different notes forming five scales plus one note. The bowls are fitted one into another on a horizontal rod which rotates them. Skyler touches the turning edges with wet fingers producing eerie, beautiful tones and chords.

### All That Jazz!

**Jean Kittrell and the St. Louis Rivermen**

Sunday, July 20<sup>th</sup> Francis Park 7:30 PM  
Monday, July 21<sup>st</sup> Tower Grove Park 7:30 PM

Jean Kittrell and her 7-piece St. Louis Rivermen liven up the series with a roaring night of jazz featuring Kittrell's red hot piano playing and singing and the all-time favorite "dancing" sousaphonist, Red Lehr!



### A Touch of Glass!

**Carolinn Skyler, Glass Armonica**

Sunday, July 27<sup>th</sup> Francis Park 7:30 PM  
Monday, July 28<sup>th</sup> Tower Grove Park 7:30 PM

Carolinn Skyler plays the Glass Armonica, an incredibly beautiful musical instrument with a bizarre, storied history, invented by Benjamin Franklin in 1761. An unforgettable, extraordinary evening of music by this exceptional blind artist from Philadelphia. Glassy!

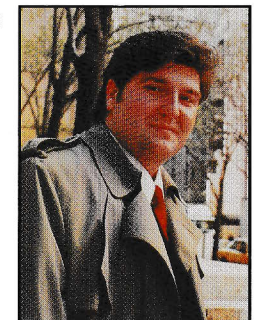


### Tenor Terrific!

**Hugh Smith, Tenor and The St. Louis Hills Chorus**

Sunday, August 3<sup>rd</sup> Francis Park 7:30 PM  
Monday, August 4<sup>th</sup> Tower Grove Park 7:30 PM

The spectacular tenor, Hugh Smith, returns with his gorgeous, powerful voice in pop, opera, hymn and classical hits! The St. Louis Hills Chorus combines with Hugh and the Band in a sensational premier performance of composer Jerry Robinson's special arrangement of Beethoven's Symphony No. 9, finale section, including the poignant "Ode To Joy"! Don't miss this extraordinary curtain closer! Hugh 2!





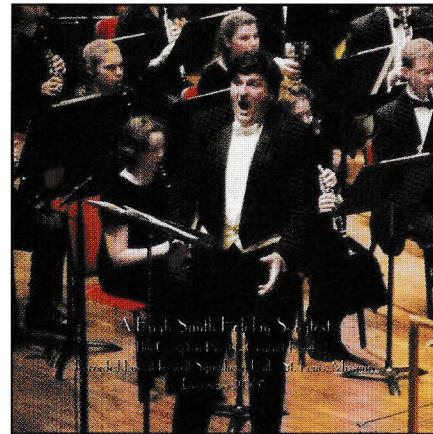
# Exciting Compton Heights Band/Hugh Smith, Tenor, CDs & Videos! Order Today!



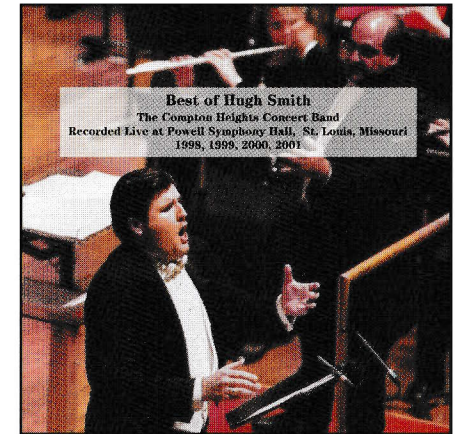
1998



1999



2000



2001

Name: \_\_\_\_\_  
 Address: \_\_\_\_\_  
 City \_\_\_\_\_ State \_\_\_\_\_ Zip \_\_\_\_\_  
 Phone (Daytime) \_\_\_\_\_ Phone (Evening) \_\_\_\_\_  
 Charge (Visa, Mastercard, American Express, or Discover)  
 Account Number: \_\_\_\_\_  
 Expiration Date: \_\_\_\_\_  
 Add \$5 for shipping and handling (if ordering by mail). Total Amount \$ \_\_\_\_\_  
 Checks Payable and Send to:  
**Compton Heights Band, Inc., 2335 So. Grand, St. Louis, Mo. 63104**  
**Phone: (314) 776-2227 FAX: (314) 772-9797**

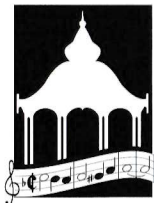
**Wow!** \_\_\_\_\_ 1 CD \$20 each Year \_\_\_\_\_  
 \_\_\_\_\_ 1 Video \$25 each Year \_\_\_\_\_

**SPECIAL: Order 2, 3 or 4: 1998, 1999, 2000, 2001, 2002 (2002 soon to be released)**

_____ 2 CD set \$35	Please indicate Years: '98 '99 _____ 2000 _____ 2001 _____ 2002
_____ 2 Video set \$50	Please indicate Years: '99 _____ 2000 _____ 2001 _____ 2002
_____ 3 CD set \$45	Please indicate Years: '98 '99 _____ 2000 _____ 2001 _____ 2002
_____ 3 Video set \$60	Please indicate Years: '99 _____ 2000 _____ 2001 _____ 2002
_____ 4 CD set \$55	Please indicate Years: '98 '99 _____ 2000 _____ 2001 _____ 2002
_____ 4 Video set \$70	Please indicate Years: '99 _____ 2000 _____ 2001 _____ 2002
_____ 5 CD set \$60	Please indicate Years: '98 '99 _____ 2000 _____ 2001 _____ 2002

**The More You Buy,  
The More You Save!**

**Available Soon  
2002!  
Order Now!**



**Compton Heights Band, Inc.**  
**2335 So. Grand Blvd.**  
**St. Louis, MO 63104**

**America's Music... America's Band!**

## The Compton Heights Concert Band Thanks our Summer Sponsors!

Blue Bunny Ice Cream, Blue Ribbon REALTORS, Catherine Manley Gaylord Foundation, Clifford Willard Gaylord Foundation, Commerce Bank, The Foot and Ankle Associates, Hoffmeister Mortuaries, Modesto Spanish Tapas Bar & Restaurant, Regional Arts Commission, St. Louis Parks, Recreation & Forestry Department, Southwest Bank, St. Louis Philanthropic Organization, Tower Grove Park, and The Bandwagon.

**Don't Miss the 26th Annual  
Memorial Day Band Concert In  
Tower Grove Park  
Monday, May 26, 2003  
3:00 PM**  
 Featuring Robert Ellison in a  
patriotic tribute to our armed forces

**Coming Soon!**  
**The Compton Heights Concert Band's**  
**Sunday Serenades**  
**Musical Mondays**



2003 Season!



Robert Ellison, Baritone

**Hooray! USA!**

Sunday June 29 in Francis Park  
Monday June 30 in Tower Grove Park  
**7:30 PM**  
**FREE!**

**Highlights:**

Robert Ellison, Hugh Smith, St. Louis Hills  
Chorus, Sensational Overture 1812 Finale  
with Civil War Cannons!

**Strike Up The Band! Join the Bandwagon!**

The Compton Heights Band needs your help more than ever! Band members donate countless hours of volunteer time practicing and fundraising year-round! Can we count on your financial donation to meet the many expenses incurred to make these concerts possible? Your tax deductible donation to join our Bandwagon means a lot to us. Membership includes recognition in programs, advance notice and other valuable benefits.

**Zowie! Free!** Hugh Smith/Compton Heights Concert Band CD with every membership this year!

*"You have a musical jewel! Take good care of it!" James Christensen, Walt Disney Consultant and former Music Director. Help keep America's Music, America's Band Alive!*

**I want to help the Band & be a Bandwagon member!**

- \_\_\_ Notables Club (Charitable Remainder Trust, Stock, R.Estate)
- \_\_\_ \$1,000 Sousafanatic
- \_\_\_ \$ 500 Bandmaster
- \_\_\_ \$ 250 Assistant Bandmaster
- \_\_\_ \$ 150 Band Director
- \_\_\_ \$ 75 Band Member
- \_\_\_ \$ 55 Band Aide
- \_\_\_ \$ 50 Senior Band Aide (65+)

**Free CD with your Membership!**



Please print your name as you would like it listed in the program.

Name: \_\_\_\_\_  
 Address: \_\_\_\_\_  
 City \_\_\_\_\_ State \_\_\_\_\_ Zip \_\_\_\_\_  
 Telephone: \_\_\_\_\_  
 Visa/MCard/AE Charge Card # \_\_\_\_\_  
 Expiration Date: \_\_\_\_\_

Check Payable to Compton Heights Band  
Send to:

**Compton Heights Band**  
2335 South Grand  
St. Louis, Mo. 63104

(314) 776-2227, FAX (314) 772-9797  
web site: www.chband.org

**Donate Your Used Car**

*Down the road, you'll be helping the Band!*



Since 1976, the Compton Heights Band has continued the Sousa American Concert Band tradition of patriotic and enjoyable music for all ages and musical tastes with the help of your donations. So, when you get ready to donate that used car, think of us. Your used car can help keep America's Music and America's Band alive for the betterment of our community and the preservation of our National musical and cultural heritage.

**Your Donation is tax deductible and towing is free!**

**CALL TODAY**

**3 1 4 - 7 7 6 - 2 2 2 7**

Please have your title available.



**Don't Just Make A Donation, Make Music!**